

II B. Tech II Semester Supplementary Examinations, Dec - 2015
BUILDING PLANNING AND DRAWING
(Civil Engineering)

Time: 3 hours

Max. Marks: 70

Note: 1. Question Paper consists of two parts (**Part-A** and **Part-B**)
2. Answer any **Three** questions in **PART-A**
3. Answer **One** question from **PART-B**

~~~~~

**PART-A**

(14 × 3 = 42M)

1. a) What are the classifications according to building bye-laws. and explain?  
b) Explain the objectives of building byelaws.
  
2. a) What are the factors to be considered by planner prior to planning of a residential building?  
Explain one of them in detail.  
b) Give the standard dimensions for the following rooms of a residential building  
(i) Veranda      (ii) Bed room      (iii) Sick room
  
3. a) What are the factors to be considered in the design of a bank building?  
b) Explain the principle of planning a hospital.
  
4. a) Draw the sign conventions of R.C.C, COPPER ALLOY, BRICK MASONRY and SAND FILLING, and TIMBER various sections?  
b) Explain and draw the neat sketch of English bond.
  
5. a) Write the importance and necessity in planning of buildings for recreation  
b) What are the requirements for green belt and landscaping?



**PART-B**

(Answer any ONE question on drawing sheet)

(1 × 28 = 28M)

6. Draw the neat sketch of Queen post truss and north light truss.
7. The line sketch of the plan of a residential building is shown in Figure 1. Draw (i) A neat dimensioned plan (ii) Sectional elevation along A-A. Specifications: Foundation: CC 1:3:6, 300 mm wide thick and 1200 mm wide, depth of foundation is 1000 mm below the ground level. Basement-coarse Rubble Masonry: 400 mm wide and 700 mm high Superstructure: Brickwork in CM 1:6, 300 mm wide and 300 mm high ROC roofing: 100 mm thick. Provide door, windows, ventilators, lintels and sunshades as per standard dimensions.

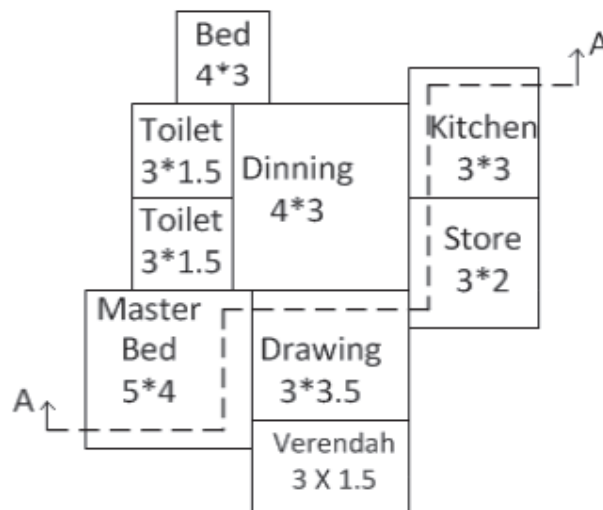


Figure 1

